



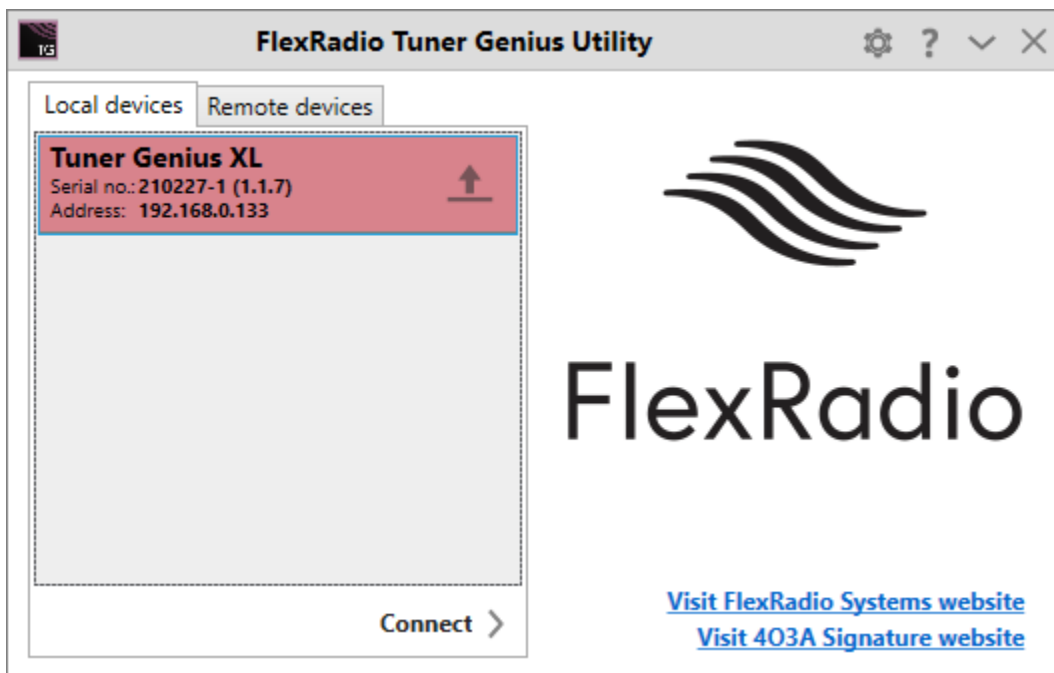
Tuner Genius™ XL Release Notes

February 25, 2022

Tuner Genius v1.1.8 is a general release for use with all Tuner Genius (TGXL™) antenna tuning units (ATUs).

FlexRadio Tuner Genius Windows Utility (version 1.1.8)

Unified Windows Utility and TGXL Firmware Releases – You must install the Tuner Genius Utility v1.1.8 to upgrade the firmware in the Tuner Genius ATU. When starting the updated TGXL Utility, once the ATU is shown in the Chooser, if the ATU's firmware is out of date, it will be displayed with a red background and a firmware upgrade icon (see below). When selected, the firmware upgrade dialog box is displayed to initiate the firmware update.



Caution: Never run previous versions of the Tuner Genius Utility with new Tuner Genius firmware. Before installing the latest release of the Tuner Genius Utility, you should remove any previous versions of the Tuner Genius Utility from all PCs on your network. Connecting an older version of the Tuner Genius Utility to a Tuner Genius ATU can result in unexpected and unreliable behavior.

Starting with the Tuner Genius Utility v1.1.1 and greater, the newer version of the Tuner Genius Utility installer will automatically uninstall the previous version of the Tuner Genius Utility.

Tuner Genius Firmware Updates (version 1.1.8)

Zero-Configuration Networking implemented: Link-local IP addresses are auto-assigned when a DHCP service is not available on the network and the unit is configured to use DHCP.

Antenna Genius Integration: status update and communication bugs have been addressed.

Auto Protection Feature to Prevent Tuning at High RF Levels: The TGXL will no longer allow manual tuning (using the utility) at forward RF power levels exceeding 200W.

PTT Output Configuration Control: PTT OUT while AUTOTUNING is now configurable (via the utility) to control if PTT OUT is asserted when AUTOTUNING. This will help integrate 3rd party amplifiers.

CAT Improvements: CAT/CI-V communication improvements – parsing errors have been corrected.

Interlock State Improvements: The TCP network connection to a FLEX-6000 is now disconnected before TGXL goes to bootloader for firmware upgrade. This should disable any interlock created by the TGXL that might stay enabled in the background.

Interlock State Improvements: The FLEX-6000 interlock is now delayed for 30ms (previously 20ms) to allow additional relay settling between channels (SO2R alternating)

Autotuning Power Recovery Change: When low power is detected, the time is between each incremental change is extended (tuning slows down to allow the power recovery) and TGXL will continue autotuning. If 10 consecutive low power solutions are observed, TGXL autotune will stop.

Autotuning Upper SWR Limit Change: If native SWR is higher than 10:1, TGXL will now allow autotuning of such antenna but will limit output power to 1000W.

Autotuning Status Change: The autotuning result will be displayed on the screen with the value of the best match found.

Bug Fix: Autotune now switches to the correct channel (A/B) that has the FLEX-6000 TX-enabled slice.

Known Issues

There are no significant known issues with Tuner Genius v1.1.8

Tuner Genius Documentation Available on www.flexradio.com

The most current documentation and quick start guides for the Tuner Genius are available as a convenient download from the FlexRadio website

[Tuner Genius Documentation and Software](#)

Obtaining Technical Support

If you encounter any issues with your Tuner Genius, please use our online [Community](#) to search for information about SmartSDR and the FLEX-6000. If you need assistance using the Community, please refer to the [Community Message Board](#) for additional information.

If you are unable to find an existing answer to your issue via the Community, please contact FlexRadio Technical Support by opening a [HelpDesk support ticket](#) online.

For details on how to submit a HelpDesk support ticket, please refer to the HelpDesk article [How to Submit a Request for Technical Support](#).

Hours of Operation: Our Technical Support engineers are available Monday-Friday from 7:00 AM-4:00 PM Central Time. If you open a HelpDesk ticket after business hours, on a holiday, or weekend, we will respond to your request for assistance during regular business hours in the order your HelpDesk ticket was received.

Copyrights and Trademarks

© 2005-2022 FlexRadio. All rights reserved.

FlexRadio is a registered trademark of Bronze Bear Communications, Inc. DBA FlexRadio.

FLEX-6300, FLEX-6400, FLEX-6400M, FLEX-6600, FLEX-6600M, FLEX-6500, FLEX-6700, FLEX-6700R, Maestro, FlexControl, Power Genius XL, PGXL, Tuner Genius XL, TGXL, SmartSDR, SmartSDR for Windows, SmartSDR for iOS, SmartSDR for MacOS, SmartSDR CAT, SmartLink, DAX, TNF, WNB, multiFLEX, SmartControl, the SmartSDR "spectrum" (logo) and the FlexRadio Systems "wave" (logo) are trademarks of FlexRadio.

FlexRadio
4616 W. Howard Lane
Suite 1-150
Austin, TX USA 78728
+1 (512) 535-4713
www.flexradio.com