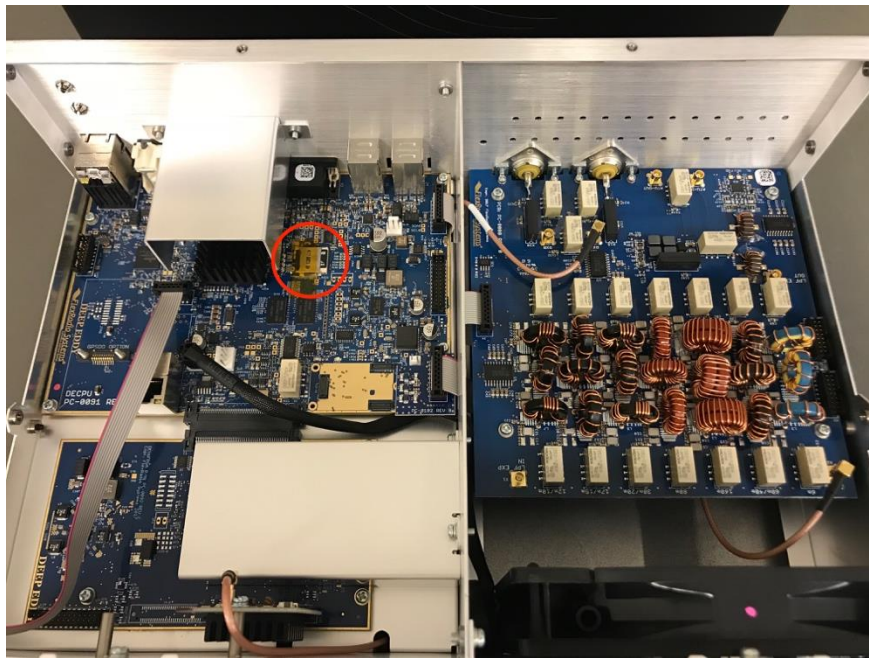


FLEX-6400/6600 Series Radio Micro SD Card Swap Instructions

Step 1: Carefully remove the top cover by removing the 4 screws on top cover and the 5 screws from each side with a T8 Torx. *(Note: Handle cover with care to avoid accidental scratching or denting.)*



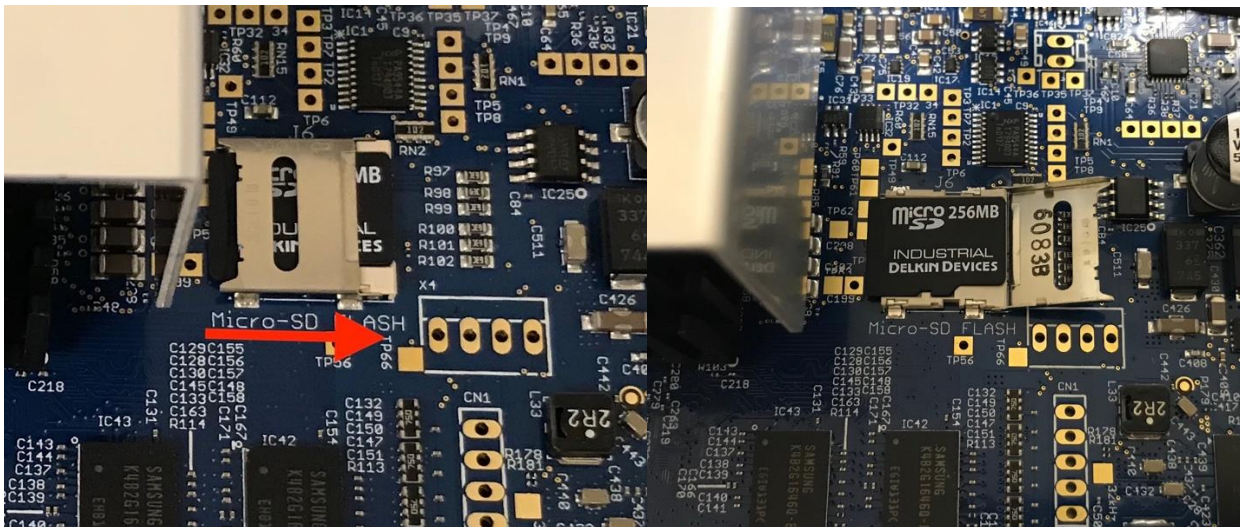
Step 2: Locate Micro SD card on CPU board.



Step 3: Remove Kapton tape from Micro SD card connector assembly.



Step 4: Remove old Micro SD card by sliding top latch of connector, lifting latch allowing it to rotate 180 degree on its hinge fully to the open position. Remove SD card and set aside to ship back to Flex.



Step 5: Install new Micro SD card in reverse order of Step 4. (Note: It is possible to get the latch closed without seating the SC card properly. Ensure SD card is seated completely flush against the connector and that the latch closes without being forced.)

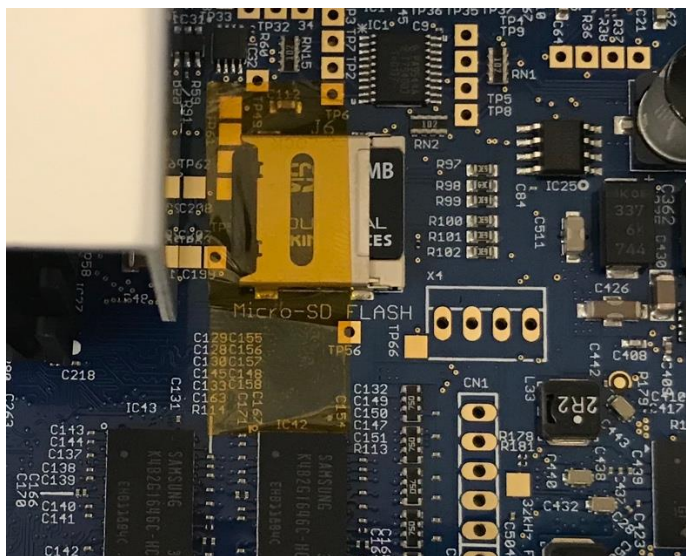
Step 6: Connect 13.8v to DC input and connect to ethernet.

Step 7: Turn radio on and verify radio boots fully on SmartSDR and Power LED is solid green. (Note: If radio does not boot, power down radio, reseal Micro SD card, power up radio and try again.)



Step 8: Power off radio by pressing green power button and allow radio to fully power off, then disconnect cables.

Step 9: Install new piece of Kapton tape over Micro SD card connector assembly.



Step 10: Carefully reinstall the top cover and install the 4 screws on top cover and the 5 screws on each side with a T8 Torx. (Note: Be careful not to overtighten screws)

