



FLEX-6000 Rack Mounting Bracket Installation Guide

July 25, 2013

Thank you for purchasing the FLEX-6000 Rack Mounting Bracket Kit. The following guide will provide the necessary step-by-step procedure for installing the FLEX-6000 Rack Mounting racket accessory.

If you are installing both the FLEX-6000 Handle assembly and the FLEX-6000 Rack Mounting Brackets, install the FLEX-6000 Handle assembly first.

Table of Contents

OBTAINING TECHNICAL SUPPORT	2
GETTING STARTED	2
<i>Required Tools</i>	2
<i>Installing the FLEX-6000 into a 19" Rack</i>	2
<i>Packaging and Rack Mounting Bracket Kit Contents</i>	3
PREPARING TO INSTALL THE RACK MOUNTING BRACKETS	4
<i>Assembling the "L" Brackets</i>	4
<i>Removing the Set Screws</i>	5
<i>Removing the Chassis Feet</i>	6
INSTALLING THE FLEX-6000 RACK MOUNTING BRACKET ASSEMBLY	7
<i>Attaching the Rack Mounting Bracket Assembly</i>	7

Obtaining Technical Support

If you encounter any issues installing your FLEX-6000 accessory, please contact FlexRadio Systems technical support by opening a HelpDesk ticket on-line at <http://helpdesk.flexradio.com> or by phone at +1 (512) 535-4713 extension #2. Please leave a voice mail message if you don't get an answer as all of our engineers are probably busy on existing calls.

Hours of Operation: Our Technical Support engineers are available Monday – Friday from 8:00am-5:30pm Central Time. If you call after business hours, on a holiday or weekend, please leave a detailed message and we will return your call during regular business hours in the order it was received.

You may always submit a HelpDesk support ticket at any time.

If you need assistance opening a HelpDesk ticket, please refer to the [HelpDesk Assistance Center](#) home page for step-by-step instructions.

Getting Started

Required Tools

A number 2 (#2) Phillips Screwdriver will be required to install the Rack Mounting Brackets to the FLEX-6000. This is not supplied with the FLEX-6000 Rack Mounting Kit.

Installing the FLEX-6000 into a 19" Rack

The FLEX-6000 can be installed in a standard 19" (48.26 cm) communications rack requiring two (2) Rack Units (RU) or 3.5 inches (89.1 mm) for installation.

Bottom and top clearance is not required, but a 1 RU space is suggested for efficient cooling of the FLEX-6000.

The FLEX-6000 Rack Mounting Kit does *not* contain the tools or fasteners to physically install or attach the FLEX-6000 to a communications rack. Those components are usually supplied by the manufacturer of the rack.

Packaging and Rack Mounting Bracket Kit Contents

Your FLEX-6000 Rack Mounting Bracket Kit will arrive in packaging similar to the one shown below.



Remove the contents of and verify that the following items are included before proceeding. Refer to the image below.

- Two (2) FLEX-6000 Chassis bracket components (small pieces)
- Two (2) Rack bracket components (large pieces)
- One (1) TORX L wrench
- Eight (8) TORX screws
- Four (4) Phillips screws



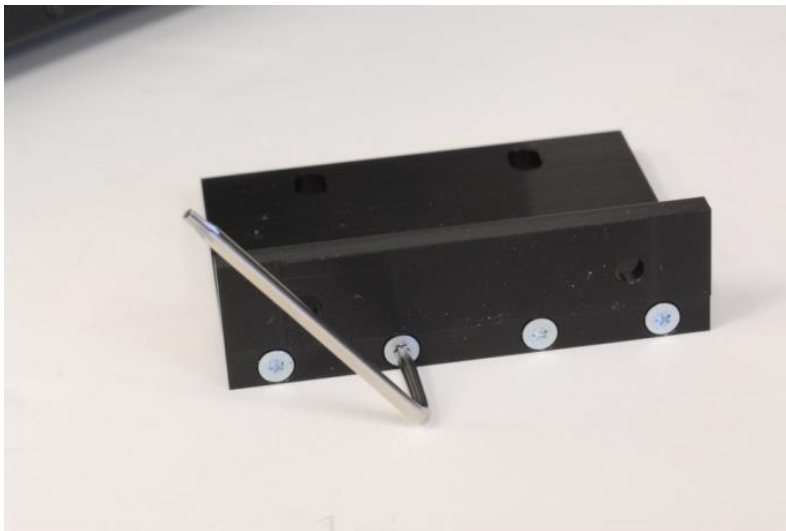
Preparing to Install the Rack Mounting Brackets

Before attaching the Rack Mounting Bracket to the FLEX-6000, they must be assembled.

Assembling the “L” Brackets

Using one each of the **Chassis bracket component** (small piece) and the **Rack bracket component** (large piece), assemble them into an “L” shape to make a complete Rack Mounting bracket assembly. Use four (4) TORX screws to hold the assembly together as shown in the image below. Screw the TORX screws in securely but *do not over tighten*. The screw heads should be flush with the bracket.

Repeat the above steps to assemble the second “L” bracket assembly.



Removing the Set Screws

Using the short “L” portion of the TORX wrench, remove the top **Set screw** from the right side of the radio as shown below. Retain the Set screws in case the Rack Mounting Brackets are removed from the radio at a later date.



Remove the bottom **set screw** as shown below.



Remove the Set screws on the left side of the radio at this time.

Removing the Chassis Feet

NOTE: If you plan to have a blank 1 RU space below the FLEX-6000, you may leave the chassis feet attached.

In order for the radio to fit in a 2 RU communications rack space, remove the four (4) feet from the chassis using a #2 Phillips screwdriver as shown in the image below. Retain the chassis feet in case the FLEX-6000 is removed from the communications rack at a later date.



Installing the FLEX-6000 Rack Mounting Bracket Assembly

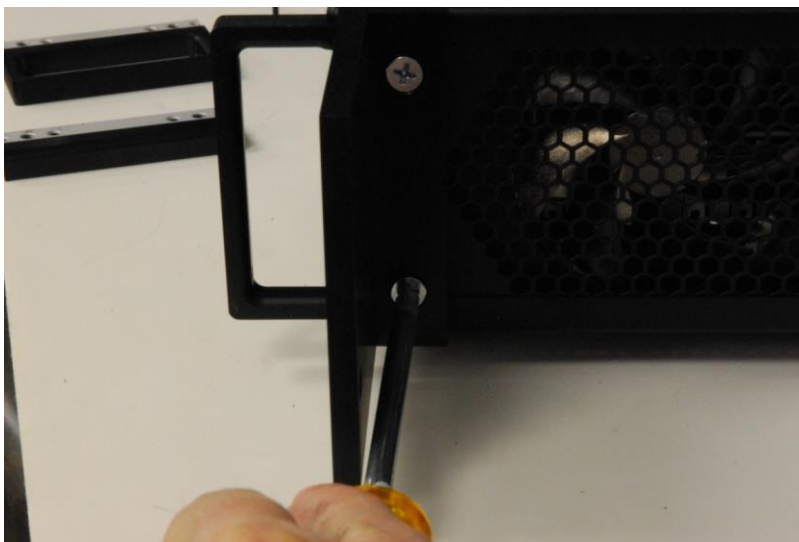
Once the Rack Mounting brackets have been assembled and the FLEX-6000 chassis Set screws have been removed the Rack Mounting brackets can be installed onto the FLEX-6000.

Attaching the Rack Mounting Bracket Assembly

On the right side of the radio, align the two (2) holes on the short flange of the mounting bracket with the two (2) holes in the FLEX-6000 chassis where the set screws were removed. In this orientation the larger flange of the Rack Mounting bracket will be pointing away from the radio. See the image below.



Insert the two (2) Phillips screws as shown in the image below (handle option shown in image) to secure the Rack Mounting bracket to the FLEX-6000. Screw the Phillips screws in securely but do **not** over tighten making certain not to cross thread the screws.



Repeat this procedure for attaching the left side brackets. When complete the FLEX-6000 should look like the image below.

